

Southeast Mesa Land Use and Transportation Plan

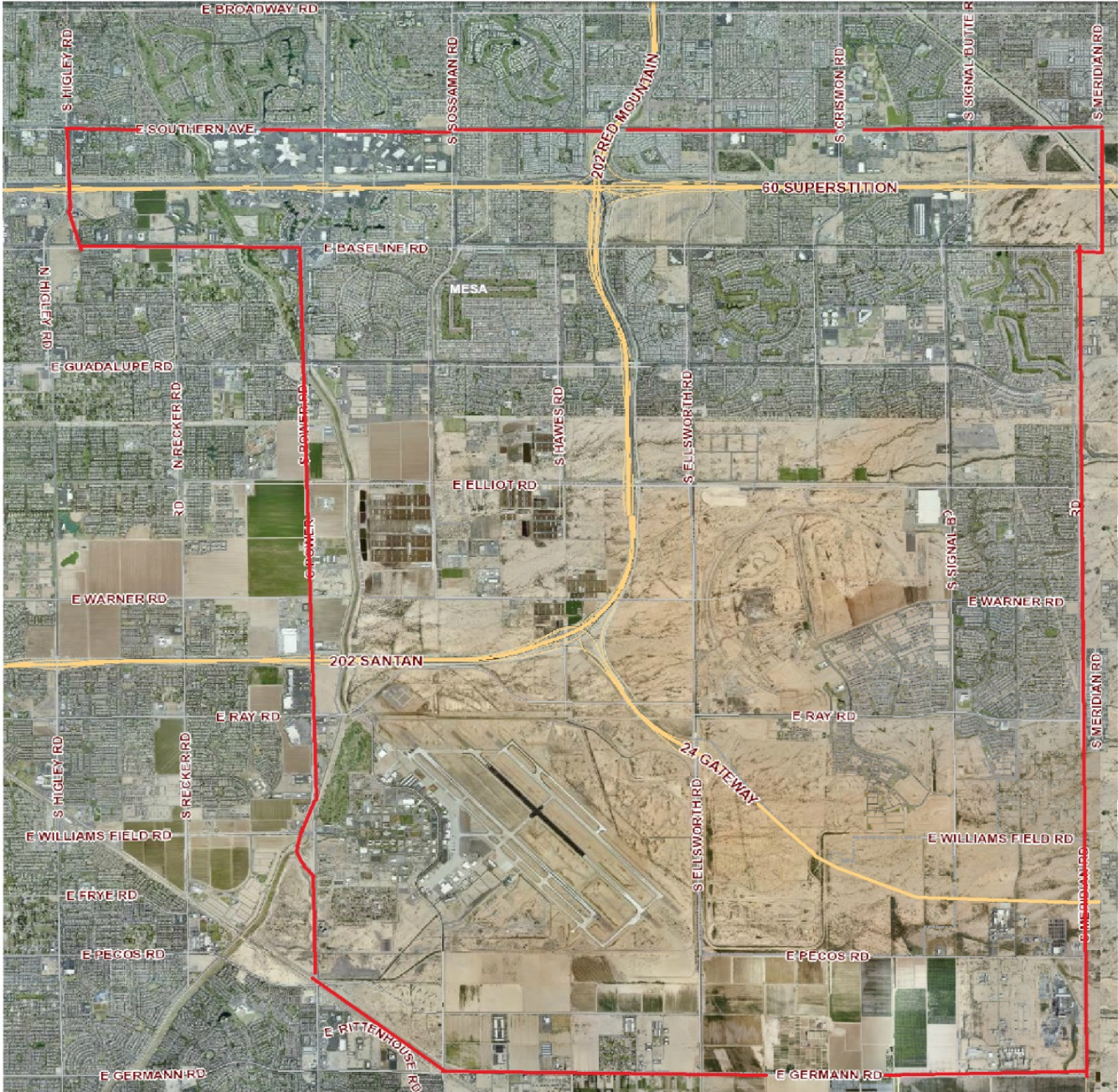
Transportation Department



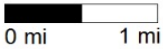
Goal of Project:

Update the land use and transportation portions of the 2008 Mesa Gateway Strategic Development Plan:

- Land use and infrastructure development since 2008 within study area
- Forecast 2040 land use development within the study area
- Detailed review of land use within ½ mile radius of the SR-24 alignment
- Transportation Master Plan based on updated land use



SE Mesa Study
Area



Goal of Project:

- Provide system-level modeling of the existing and planned street transportation systems with projected land use Planning and SR-24 Corridor Update.
- The project will provide a tool to prioritize future transportation projects.

